



TIPS FOR TALKING ABOUT PAY

HOW TO HELP VACCINE UPTAKE

WORKPLACE ASSAULTS: WHAT TO DO

MEET OUR RCN AWARD WINNERS

FOR RCN ACTIVE MEMBERS ACROSS THE UK AUTUMN 2021

FLEX TO RETAIN

HELPING PEOPLE AVOID LEAVING WORK
FOLLOWING THEIR TREATMENT FOR CANCER

As our most active and engaged members, you'll know that recent months have seen more internal challenges than any of us would ever want. For the time I have this role, I will dedicate myself to getting this College into the f t shape you expect.

I wish

Editor:

Production:

Design:

Published by:

W: rcn.org.uk/activate

E: activate@rcn.org.uk

Publication code:

Cover image:

Don't forget, this is your magazine.

activate@rcn.org.uk

Contents

As part of a commitment to change in the RCN, Council has instructed Bruce Carr QC to carry out an independent review into the culture of the organisation.

Recommendations are being sought from a wide-ranging and external review, which will thoroughly scrutinise the College's: decision-making and accountability; financial management; equality and inclusion; management of departure of staff and elected members; allegations of sexual harassment; roles and responsibilities of staff and elected members.

The new case management system goes live for RCN stewards next month, with learning reps and safety reps given access before the end of the year. You will already have received information about how to set up your RCN email account needed to use the new system.

If you're having problems, contact our IT team on **02920 546400** or see the guidance on the reps hub: rcn.org.uk/repshub. You won't be able to access the new system without setting up your RCN email account, and the old system will no longer work. Once you've set up your RCN email account, you should use this, as opposed to your personal email account, for all RCN business. This applies to all members with an RCN email address.

As *Activate* went to press,

6

Five tips for talking to the public about pay

8 HELPING MEMBERS

Flex to retain

Helen's advice on supporting members

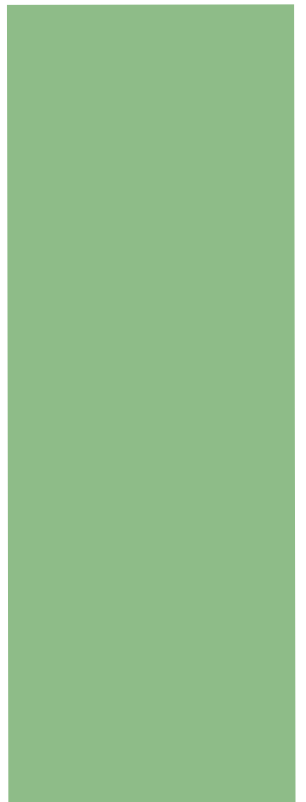
-

10

From 11 November, it will be a condition of employment for adult care home workers in England



Kafeelat's story



14 ASSAULTS AT WORK

When RCN steward Phil



used it," says Holly. "It was inspired by a couple of members who had an almost revolving door of new managers, which left them having to constantly explain their conditions and what they needed. This takes some of that frustration away."

Starting a conversation

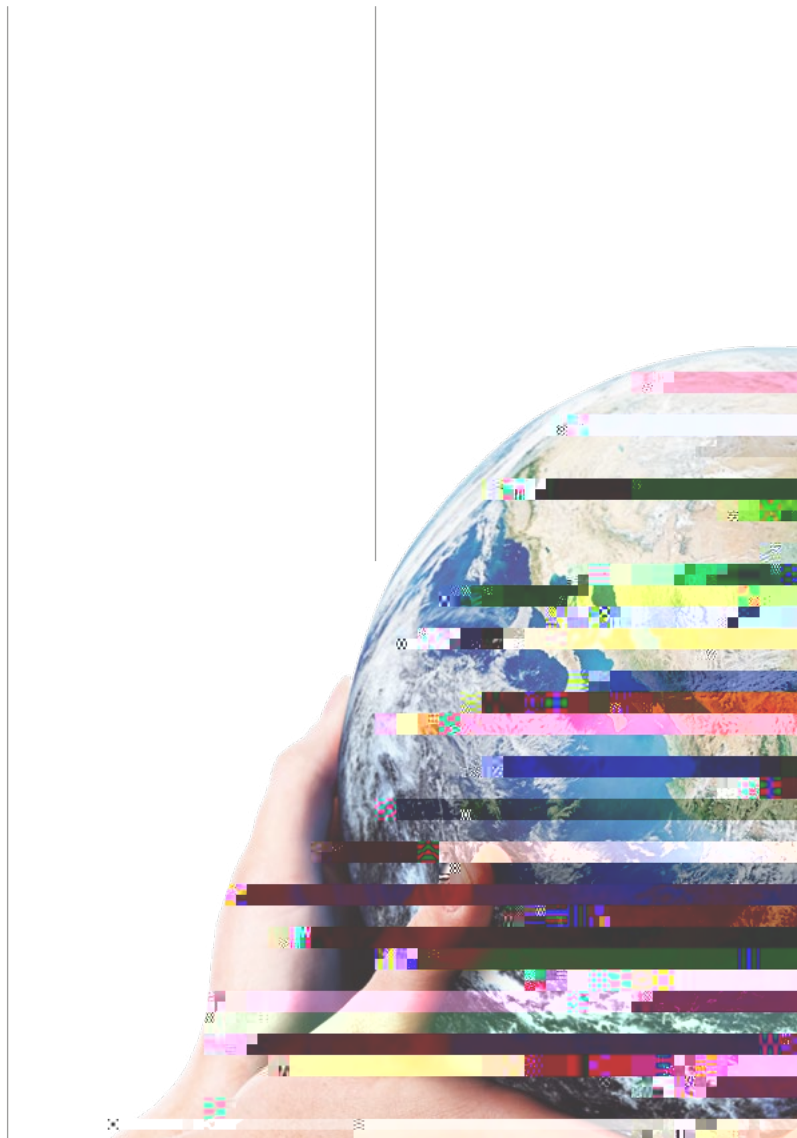
From BQW, Stewart Nairne, (r 9,200FD(0)0d)-880 sets the scene, Cox, the benefits of health ability passports are too many to be ignored.

"It helps staff who might be reluctant to share details of their conditions, supporting them to be more open so they can get the adja

18 SPOTLIGHT ON...

The International Committee

Find out about the work of this important committee and how it shapes our approach to global nursing issues



These alliances provide an important mechanism to strengthen nursing leadership globally, as well as nationally, by creating space to explore and address issues that are important to the profession no matter where you practise

