

**NSPCC**

**Child Trafficking Advice Centre  
(CTAC)**

**0808 800 5000**

**Beth Hurley – & KLOGUHQT V 6HUYLF  
Practitioner**

# CTAC Remit

---

Service for  
professionals who  
have child  
trafficking concerns

Multi-

# CTAC Team

<b>Social Workers</b>	<b>Immigration officers</b>	<b>National Crime Agency</b>
Casework		

# Impact of Young People's Advisory Group



# What is child trafficking?

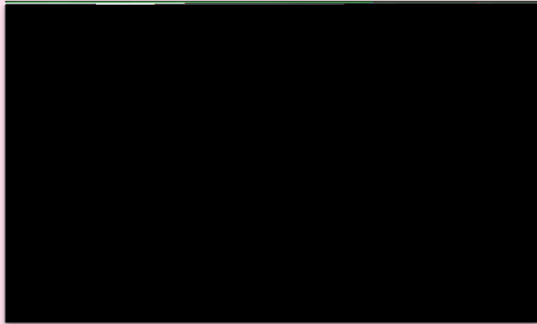
---

The movement of a child for the purpose of exploitation.

A child cannot give informed consent to being abused.

Child trafficking is child abuse.

# What are children trafficked for?



Forced marriage



Exploitative labour -  
nail bars,  
restaurants,  
factories

Unregistered private  
fostering  
arrangements for  
possible benefit or  
immigration fraud

Illegal adoption

Moving drugs

Removal of organs



# What are the Risk Indicators?

Foreign National  
Child

Brought or moved  
from another  
country

Has false  
documentation/no  
passport or ID

Separated from  
carers or those with  
Parental  
Responsibility

With an adult, but  
unclear/concerning  
relationship

With adult who  
speaks for the child

Orphaned or  
separated from  
family or main  
carers

Missing

Has unexplained  
money or goods

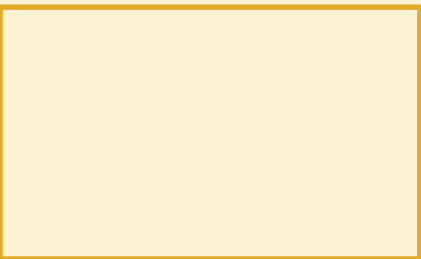
Physical symptoms;  
S U H J Q D Q W  
sexual or physical  
assault, poor dental  
health

Emotional health  
concerns



---

Signs of physical  
trauma, including old  
injuries



# Listen to Me



# Where to Report....

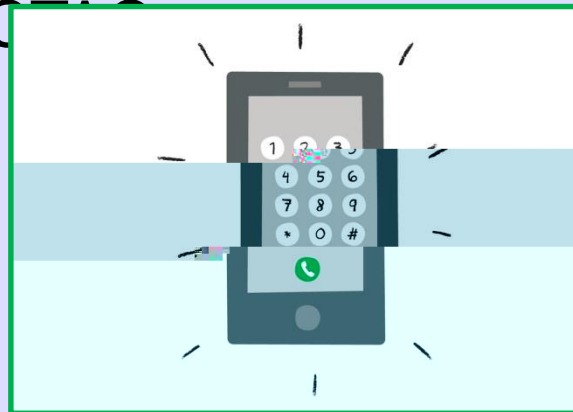
Discuss your concern with your Safeguarding Lead/Team

5 HSRUW \RXU FRQFHUQV WR WKH 3R

Care

5 HIHU WKH FKLOG \RXQJ SHUVRQ WR

Contact NSPCC 0711 14



# National Referral Mechanism (NRM)

---

3. Reasonable Grounds

2. Complete NRM  
forms

1. Child may be a potential  
victim of trafficking

# NSPCC Child Trafficking Advice Centre

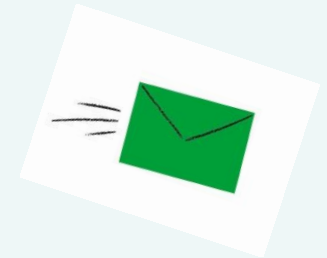
---

**0808 800 5000**



**9am-4.30pm Monday to Friday**

**[CTAC@nspcc.org.uk](mailto:CTAC@nspcc.org.uk)**



**[www.nspcc.org.uk/ctac](http://www.nspcc.org.uk/ctac)**

